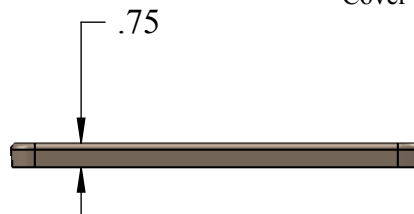
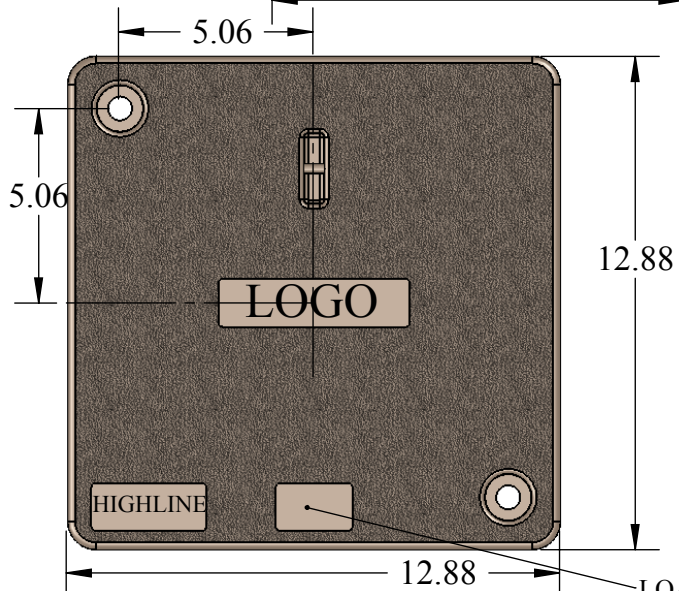
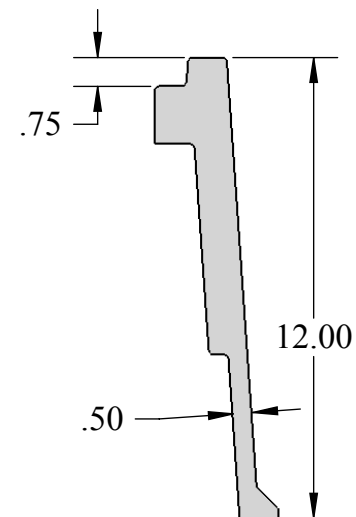
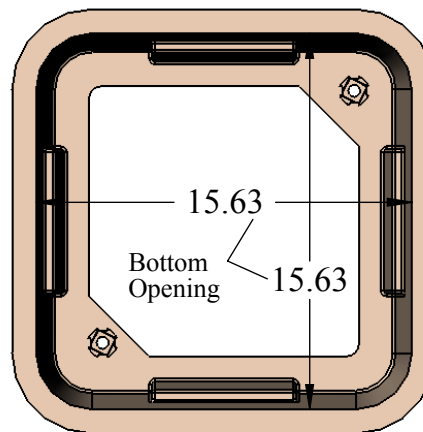
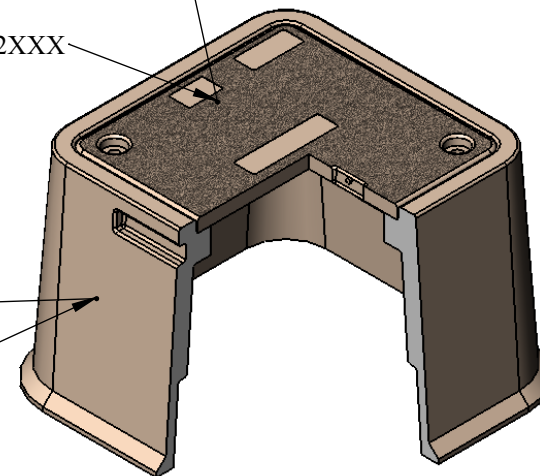


BOTTOM VIEW



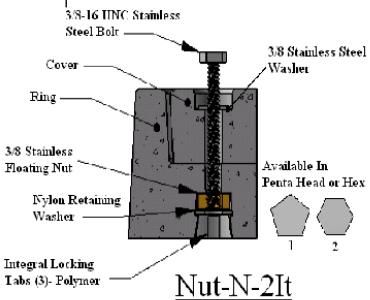
Polymer Concrete Cover

Cover Only: CHC1212XXX



Polymer Concrete Box

Box Only: PTB121212



Nut-N-2It

LOAD RATING LOGO

Rev.B was for dimensions change on cover

PROPRIETARY AND CONFIDENTIAL
 THE INFORMATION CONTAINED IN THIS DRAWING IS THE SOLE PROPERTY OF HIGHLINE PRODUCTS. ANY REPRODUCTION IN PART OR AS A WHOLE WITHOUT THE WRITTEN PERMISSION OF HIGHLINE PRODUCTS IS PROHIBITED.

UNLESS OTHERWISE SPECIFIED:

DIMENSIONS ARE IN INCHES
 TOLERANCES: $\pm 1/8"$
 FRACTIONAL \pm
 ANGULAR: MACH \pm BEND \pm
 TWO PLACE DECIMAL \pm
 THREE PLACE DECIMAL \pm

INTERPRET GEOMETRIC TOLERANCING PER:

MATERIAL:
 Polymer Concrete

DO NOT SCALE DRAWING

NAME DATE

DRAWN/ENG. SK 05.24.11

CHECKED

HIGHLINE APPR.

MFG APPR.

Q.A.

BOX WEIGHT= 37 lbs.

COVER WEIGHT= 10 lbs.

UNITS PER PALLET= # 20

HIGHLINE
 PRODUCTS

All Polymer Pull Box (Tapered)
 Model PTA 121212
 Tier8 (S) 12,000 lbs. , Tier15 (H) 22,500 lbs.
 Tier22 (X) 33,800 lbs.

SIZE DWG. NO.

A PTA121212

REV

B

SCALE: NTS

SHEET 1 OF 1