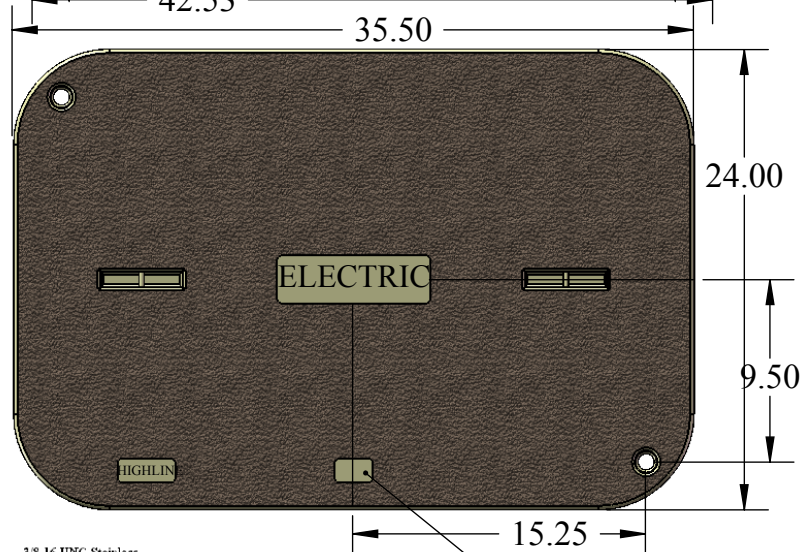
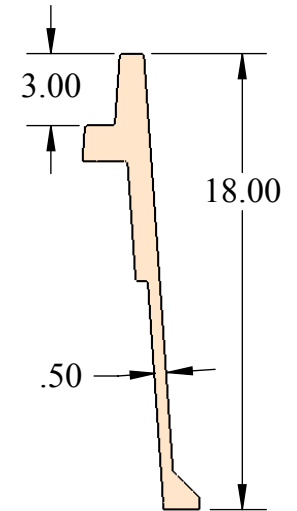
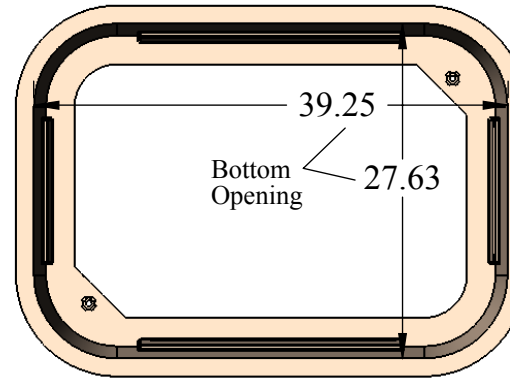
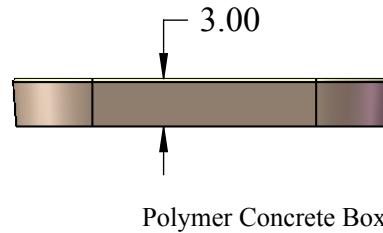


BOTTOM VIEW



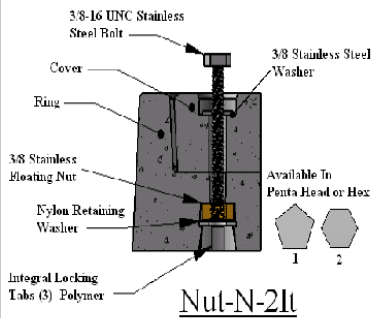
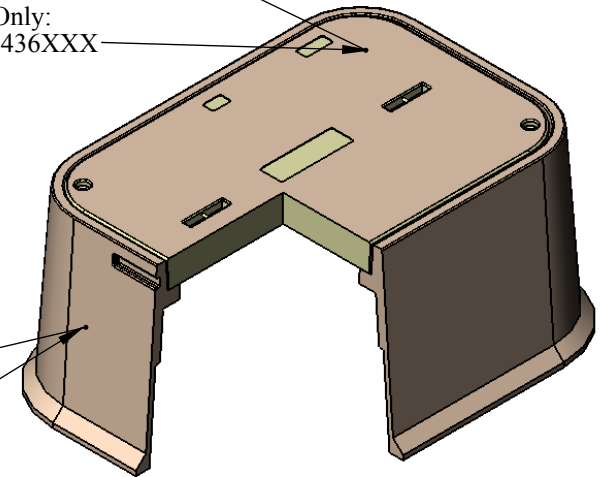
Polymer Concrete Cover

Cover Only:
CHC2436XXX



Polymer Concrete Box

Box Only:
PTB243618



LOAD RATING LOGO

PROPRIETARY AND CONFIDENTIAL
THE INFORMATION CONTAINED IN THIS DRAWING IS THE SOLE PROPERTY OF HIGHLINE PRODUCTS. ANY REPRODUCTION IN PART OR AS A WHOLE WITHOUT THE WRITTEN PERMISSION OF HIGHLINE PRODUCTS IS PROHIBITED.

UNLESS OTHERWISE SPECIFIED:

DIMENSIONS ARE IN INCHES
TOLERANCES: +/- 1/8"
FRACTIONAL ±
ANGULAR: MACH ± BEND ±
TWO PLACE DECIMAL ±
THREE PLACE DECIMAL ±

INTERPRET GEOMETRIC TOLERANCING PER:
MATERIAL: Polymer Concrete
FINISH

DO NOT SCALE DRAWING

NAME: SK
DATE: 07.15.09

DRAWN/ ENG.
CHECKED
HIGHLINE APPR.
MFG APPR.

COMMENTS:
BOX WEIGHT= 150 lbs.
COVER WEIGHT = 110 lbs.
UNITS PER PALLET = # 5



All Polymer Pull Box (Tapered)
Model PTA243618
Tier8 (S) 12,000 lbs., Tier15 (H) 22,500 lbs.
Tier22 (X) 33,800 lbs.

| | | |
|----------|-----------|----------|
| SIZE | DWG. NO. | REV |
| A | PTA243618 | A |

SCALE: NTS SHEET 1 OF 1