

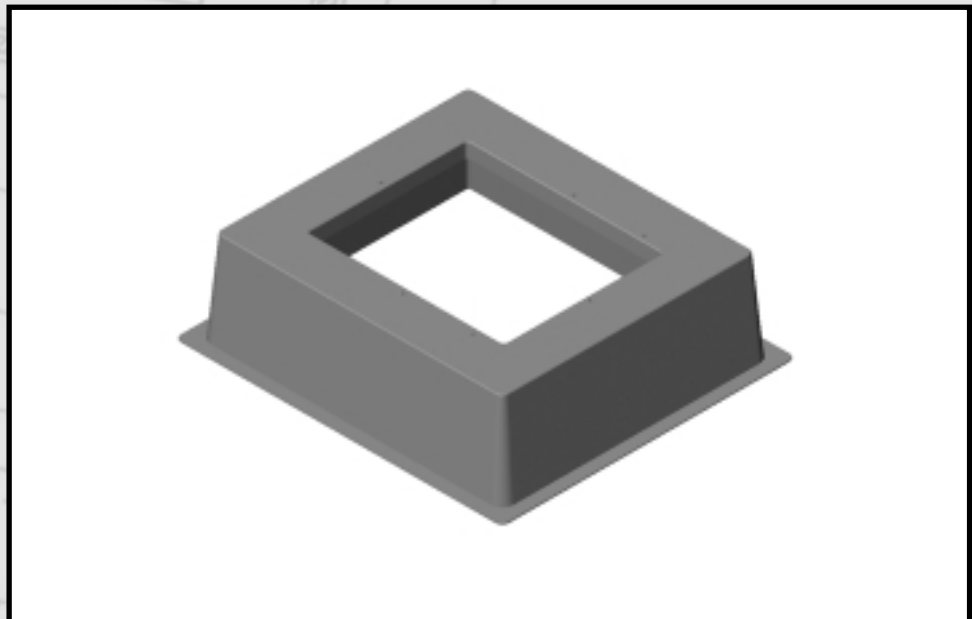
HL-49 Low Profile Fiberglass Box Pad

PRODUCT FEATURES

- Superior strength. Top load tested with simulated transformer frame up to 10,000 lbs. without failure.
- Compression molded using a preform and polyester resin. The fiberglass imparts to the polyester high flexural and tensile strength.
- Exceeds Northeast Underground Test Guidelines. Test results available on request.
- Lightweight.
- Readily available from inventory.
- Easy to transport and install.
- Shallow (15" deep).
- Long maintenance free life.
- For transformers up to 167KVA.

Optional Features:

- Choice of non skid fiberglass covers with penta head or fargo lock mechanisms.
- Top opening sizes, 32"x 26", 30³/₄" x 26", and 24³/₄" x 22³/₄".
[Aperture dimensions (inches) are measured at the intersection of projected adjacent planes.]



Dimensions:

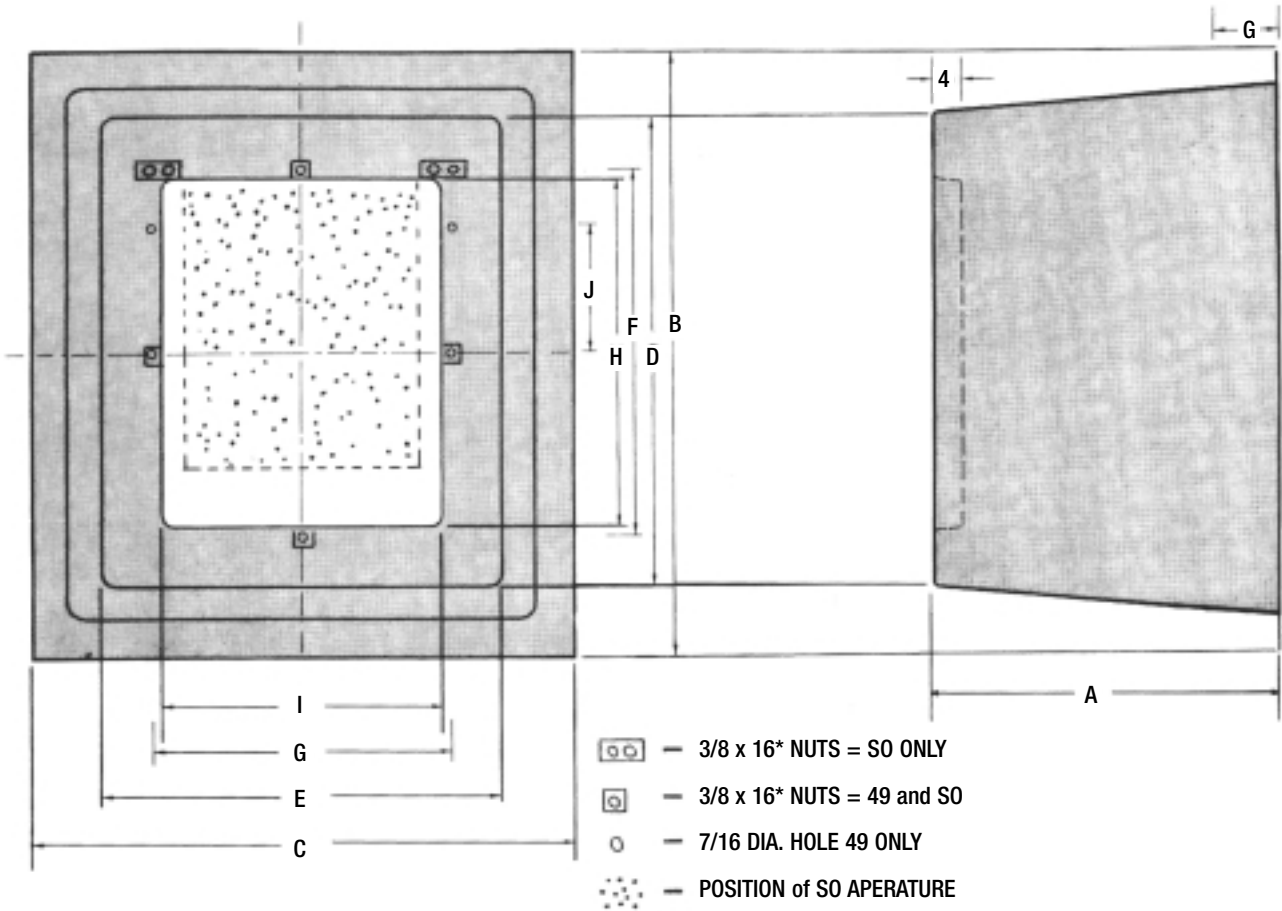
CAT. NO.	OVERALL			TOP		**ENCAPSULATED			APERATURE	
	Height	Width	Length	Width	Length	NUT POSITION			Width	Length
	(A)	(B)	(C)	(D)	(E)	(F)	(G)	(J)	(H)	(I)
HL-49	15	53½	48	43	37½	34	28	11½	32	26
HL-49-M	15	53½	48	43	37½	34	28	11½	32	26
HL-49-SO	15	53½	48	43	37½	34	28	11½	24¾	22¾
HL-49-SO-M	15	53½	48	43	37½	34	28	11½	24¾	22¾
HL-49-DE-M	15	53½	48	43	37½	34	28	11½	30½	26

The "M" product line uses some recycled resin.

* Top opening not centered

** All nuts are encapsulated

Aperture dimensions (inches) are measured at the intersection of projected adjacent planes.



Optional Covers:

- HL-45-2EF BOX PAD COVER, ELECTRIC FARGO STUD
- HL-45-2EP BOX PAD COVER, ELECTRIC PENTA HARDWARE
- HL-45-2ES BOX PAD COVER, ELECTRIC SCREW

HL-45-2TS BOX PAD COVER, TELEPHONE SCREW

Additional hole openings available in the new millennium line. See pages 2-3. Additional sizes available. See pages 18-19.