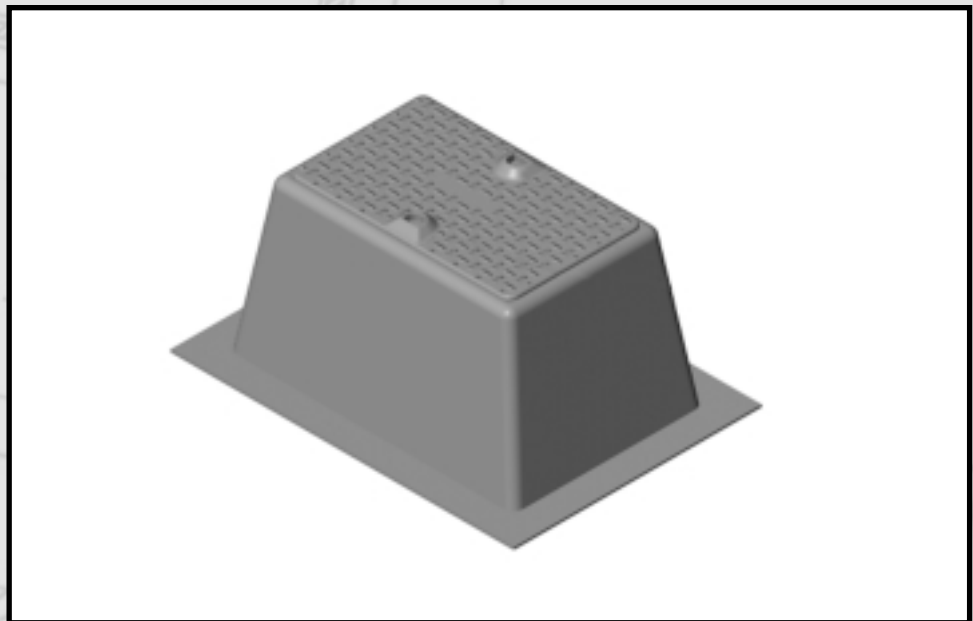


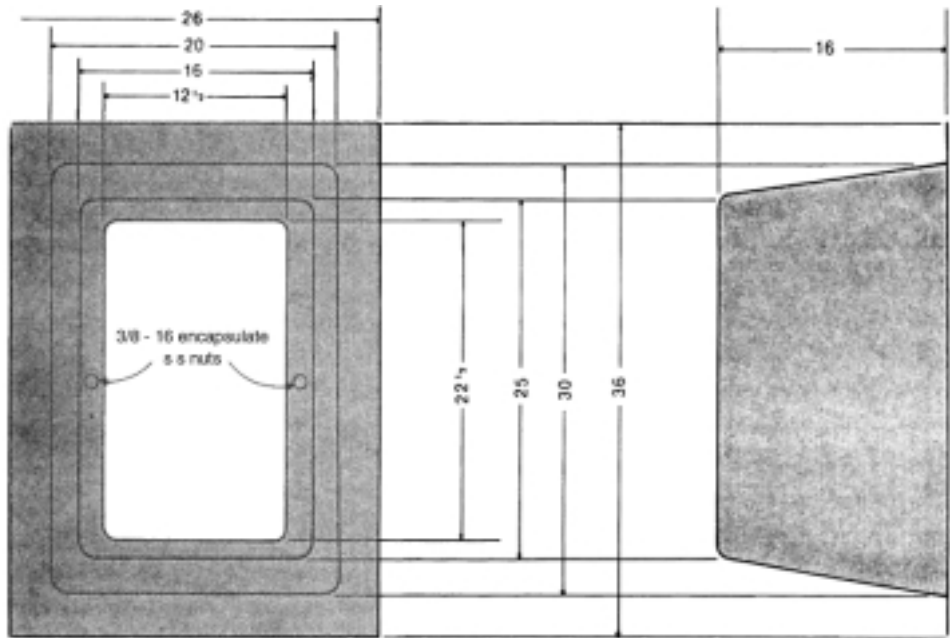
Fiberglass Secondary Splice Box

PRODUCT FEATURES

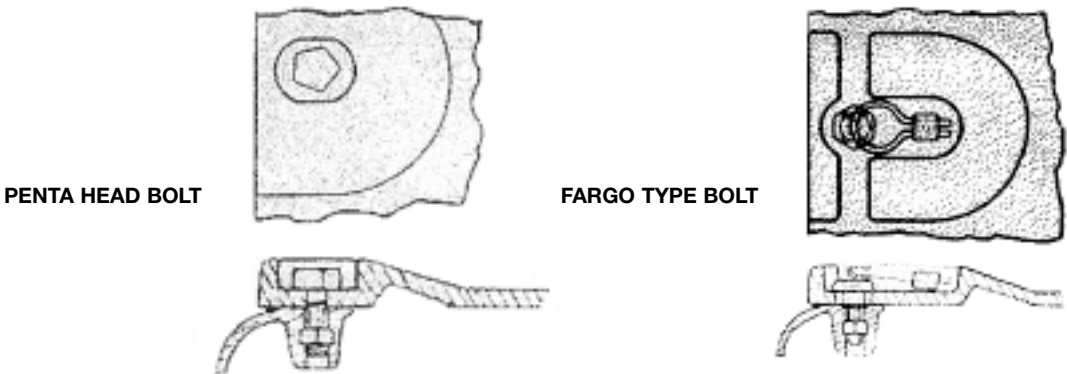
- High strength. Much stronger than thermoplastic boxes.
- Compression molded. Using a fiberglass preform and polyester resin. The fiberglass imparts to the polyester high flexural and tensile strength.
- UV protected. Limits effects of radiation and weather.
- Long maintenance-free life.
- Compact storage. Boxes stack & nest.
- Lid tested to 6500 lbs.



Dimensions:



Locking Methods



Ordering Information

- HL-41** SPLICE BOX LESS COVER
- HL-41A*** SPLICE BOX W/COVER, ELECTRIC, PENTA HEAD
- HL-41B*** SPLICE BOX W/COVER, ELECTRIC, FARGO STUD
- HL-41C*** SPLICE BOX W/COVER, TELEPHONE, FARGO STUD
- HL-41D*** SPLICE BOX W/COVER, TELEPHONE, PENTA HEAD
- HL-41EF*** SPLICE BOX COVER, ELECTRIC, FARGO STUD
- HL-41EP*** SPLICE BOX COVER, ELECTRIC, PENTA HEAD
- HL-41TF*** SPLICE BOX COVER, TELEPHONE, FARGO STUD
- HL-41TP*** SPLICE BOX COVER, TELEPHONE PENTA HEAD

*Heavy duty lids available

Additional sizes and opening available in a spray-up version.
See pages 38-39.